


| AREA - CONDITIONED SPACE | |
|---|----------------------|
| NOTE: CONDITIONED SPACE MEASURED FROM EXTERIOR SURFACES OF EXTERIOR FRAMING | |
| CONDITIONED | |
| GARAGE ENTRY | 116 SF CONDITIONED |
| MAIN LEVEL LIVING | 2914 SF CONDITIONED |
| MECHANICAL | 234 SF CONDITIONED |
| UPPER LEVEL LIVING | 184 SF CONDITIONED |
| 4090 SF | |
| UNCONDITIONED | |
| COVERED ENTRY | 82 SF UNCONDITIONED |
| GARAGE/STORAGE | 516 SF UNCONDITIONED |
| PATIO | 431 SF UNCONDITIONED |
| 1024 SF | |
| GRAND TOTAL | 5121 SF |

11251 SE 232nd AVE



DAMASCUS, OR 97089

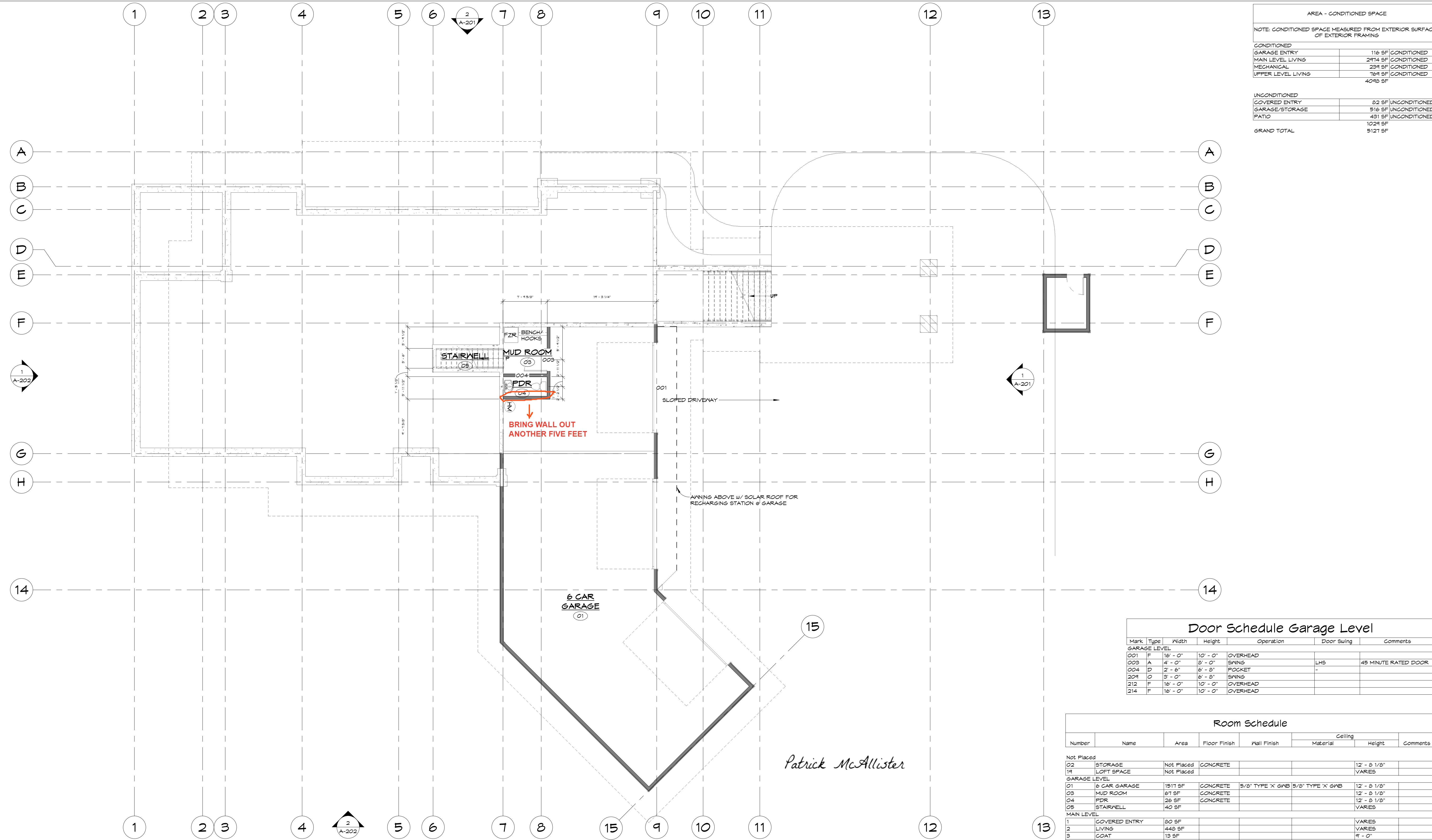
BROOKS CUSTOM HOME
 32821 SW RIEDWEG RD.
 CORNELIUS, OR 97113

GARAGE LEVEL

Drawn By
 TL
 4/7/2023 1:07:39 PM

| Drawing Index | | |
|---------------|------|-------------|
| No. | Date | Description |
| | | |

A-101

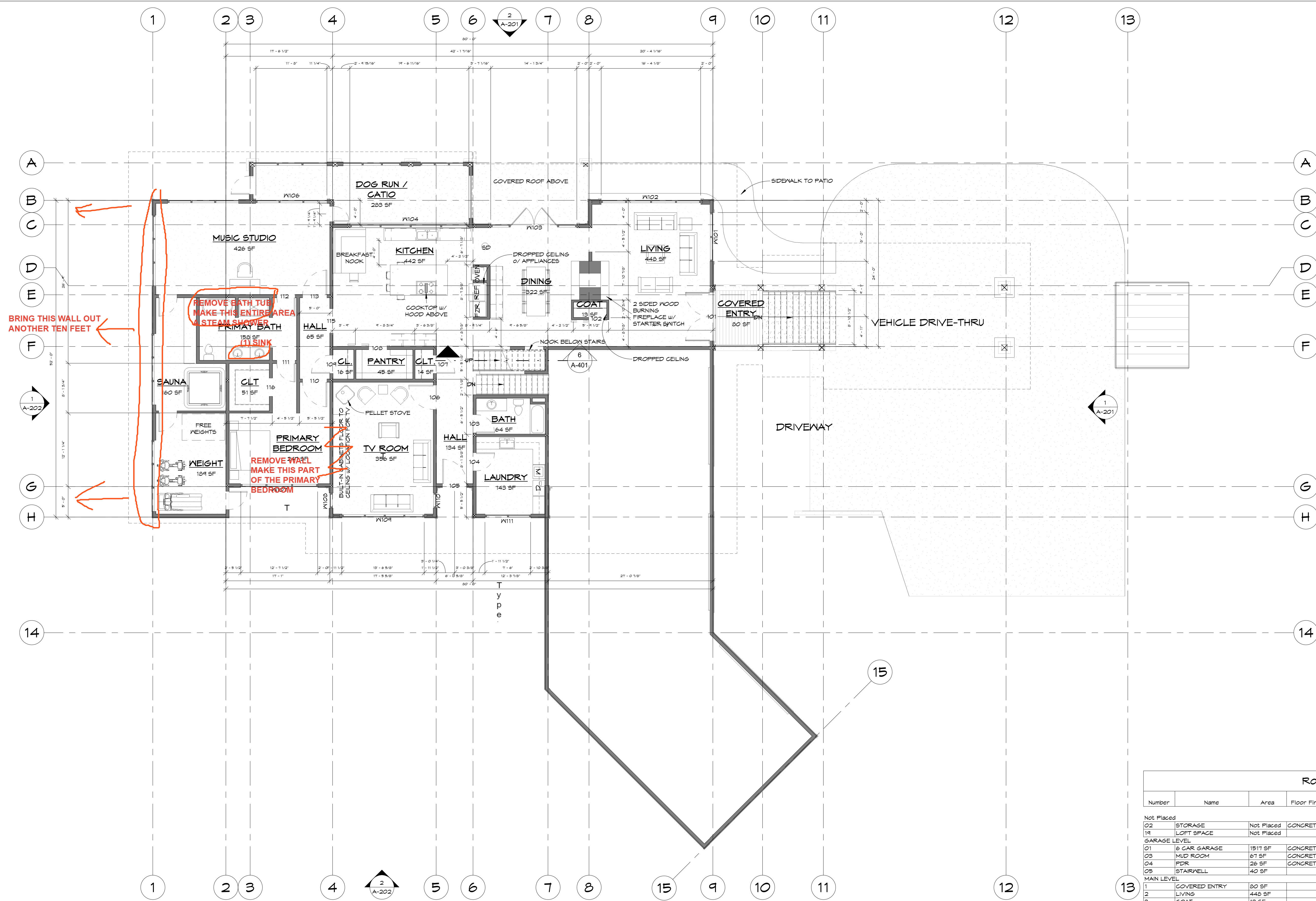


| Mark | Type | Width | Height | Operation | Door Swing | Comments |
|------|------|----------|----------|-----------|------------|----------------------|
| 001 | F | 16' - 0" | 10' - 0" | OVERHEAD | | |
| 003 | A | 4' - 0" | 8' - 0" | SWING | LHS | 45 MINUTE RATED DOOR |
| 004 | D | 2' - 6" | 6' - 0" | POCKET | | |
| 209 | O | 3' - 0" | 6' - 0" | SWING | | |
| 212 | F | 16' - 0" | 10' - 0" | OVERHEAD | | |
| 214 | F | 16' - 0" | 10' - 0" | OVERHEAD | | |

| Number | Name | Area | Floor Finish | Wall Finish | Ceiling | | Comments |
|--------------|-----------------|------------|--------------|-------------------|-------------------|--------|--------------|
| | | | | | Material | Height | |
| Not Placed | | | | | | | |
| 02 | STORAGE | Not Placed | CONCRETE | | | | 12' - 8 1/8" |
| 11 | LOFT SPACE | Not Placed | | | | | VARIES |
| GARAGE LEVEL | | | | | | | |
| 01 | 6 CAR GARAGE | 1511 SF | CONCRETE | 5/8" TYPE 'X' GNB | 5/8" TYPE 'X' GNB | | 12' - 8 1/8" |
| 03 | MUD ROOM | 67 SF | CONCRETE | | | | 12' - 8 1/8" |
| 04 | PDR | 26 SF | CONCRETE | | | | 12' - 8 1/8" |
| 05 | STAIRWELL | 40 SF | | | | | VARIES |
| MAIN LEVEL | | | | | | | |
| 1 | COVERED ENTRY | 80 SF | | | | | VARIES |
| 2 | LIVING | 448 SF | | | | | VARIES |
| 3 | COAT | 13 SF | | | | | 8' - 0" |
| 4 | DINING | 322 SF | | | | | VARIES |
| 5 | KITCHEN | 442 SF | | | | | VARIES |
| 6 | HALL | 134 SF | | | | | VARIES |
| 7 | BATH | 64 SF | | | | | 8' - 1 3/8" |
| 8 | LAUNDRY | 143 SF | | | | | 8' - 1 3/8" |
| 06 | SAUNA | 160 SF | | | | | |
| 11 | TV ROOM | 356 SF | | | | | VARIES |
| 04 | WEIGHT | 134 SF | | | | | |
| 10 | CLT. | 14 SF | | | | | VARIES |
| 11 | PANTRY | 45 SF | | | | | VARIES |
| 12 | HALL | 65 SF | | | | | VARIES |
| 13 | CL. | 16 SF | | | | | VARIES |
| 14 | PRIMARY BEDROOM | 247 SF | | | | | VARIES |
| 15 | CLT. | 51 SF | | | | | VARIES |
| 16 | PRMAY BATH | 150 SF | | | | | VARIES |
| 17 | MUSIC STUDIO | 426 SF | | | | | VARIES |
| 18 | DOG RUN / PATIO | 283 SF | | | | | VARIES |
| UPPER LEVEL | | | | | | | |
| 06 | BEDROOM | 230 SF | | | | | |
| 07 | BEDROOM | 110 SF | | | | | |
| 20 | CLOSET | 25 SF | | | | | VARIES |
| 21 | LOUNGE | 630 SF | | | | | VARIES |
| 22 | CLT. | 6 SF | | | | | VARIES |
| 23 | BATH | 61 SF | | | | | VARIES |
| 25 | CLOSET | 97 SF | | | | | |
| 26 | BATH | 103 SF | | | | | |
| 21 | TLT. | 24 SF | | | | | |
| 25 | Room | 85 SF | | | | | |
| OFFICE TP | | | | | | | |
| 24 | MECHANICAL ROOM | 215 SF | | | | | VARIES |
| | | 6954 SF | | | | | |

1 GARAGE LEVEL
 1/8" = 1'-0"

| AREA - CONDITIONED SPACE | |
|---|---------|
| NOTE: CONDITIONED SPACE MEASURED FROM EXTERIOR SURFACES OF EXTERIOR FRAMING | |
| CONDITIONED | |
| GARAGE ENTRY | 116 SF |
| MAIN LEVEL LIVING | 2474 SF |
| MECHANICAL | 234 SF |
| UPPER LEVEL LIVING | 764 SF |
| | 4048 SF |
| UNCONDITIONED | |
| COVERED ENTRY | 80 SF |
| GARAGE/STORAGE | 516 SF |
| PATIO | 431 SF |
| | 1027 SF |
| GRAND TOTAL | 5127 SF |



11251 SE 232nd AVE

 DAMASCUS, OR 97089
BROOKS CUSTOM HOME
 32821 SW RIEDWEG RD.
 CORNELIUS, OR 97113

1 MAIN LEVEL
 1/8" = 1'-0"

| Mark | Type | Width | Height | Operation | Door Swing | Comments |
|------|------|------------|-----------|----------------------|------------|---------------------------------|
| 101 | B | 0'-0" | 0'-0" | DOUBLE SWING - GLASS | NSWING | |
| 102 | G | 2'-6" | 6'-8" | BARN DOOR | LHS | |
| 103 | A | 3'-0" | 0'-0" | SWING | RHS | |
| 104 | A | 3'-0" | 0'-0" | SWING | LHS | |
| 105 | A | 4'-0" | 0'-0" | SWING | LHS | |
| 106 | A | 4'-0" | 0'-0" | SWING | RHS | |
| 107 | A | 3'-0" | 0'-0" | SWING | RHS | |
| 108 | C | 0'-0" | 0'-0" | BARN DOOR | RHS | |
| 109 | A | 3'-0" | 0'-0" | SWING | LHS | |
| 110 | A | 4'-0" | 0'-0" | SWING | LHS | |
| 111 | A | 3'-0" | 0'-0" | SWING | RHS | |
| 112 | A | 3'-0" | 0'-0" | SWING | - | |
| 113 | A | 4'-0" | 0'-0" | SWING | RHS | |
| 115 | - | 4'-0" | 0'-0" | ARCHED TOP OPENING | - | |
| 116 | - | 3'-0" | 0'-0" | ARCHED TOP OPENING | - | |
| 229 | HHHH | 2'-6" | 0'-0" | SWING | - | |
| 230 | A | 3'-0" | 0'-0" | SWING | - | |
| 231 | A | 3'-0" | 0'-0" | SWING | - | |
| 232 | A | 3'-0" | 0'-0" | SWING | - | |
| 233 | A | 3'-0" | 0'-0" | SWING | - | |
| 234 | A | 3'-0" | 0'-0" | SWING | - | |
| D111 | - | 3'-10 1/2" | 0'-4 1/2" | SWING | OUTSWING | SEE CURTAIN MALL LEGEND 3/A-109 |
| D112 | - | 3'-10 1/2" | 0'-4 1/2" | SWING | OUTSWING | SEE CURTAIN MALL LEGEND 3/A-109 |

| Mark | Type | Width | Height | Head Height (BTM of HDR) | Operation | Comments |
|------|------|-------|--------|--------------------------|-----------|----------|
| 103 | A | 7'-9" | 6'-0" | 14'-10" | PICTURE | |

| Mark | Length | Unconnected Height | Area | Comments |
|-------------|-------------|--------------------|--------|-------------------------|
| T-0 3/32" | 9'-0" | | 63 SF | |
| T-0" | 11'-0" | | 71 SF | |
| 9'-6" | 11'-0" | | 105 SF | |
| 11'-8" | 11'-0" | | 120 SF | |
| 11'-8" | 11'-0" | | 120 SF | |
| 11'-8" | 11'-0" | | 120 SF | |
| 12'-5 3/16" | 11'-0" | | 133 SF | |
| 0'-0" | 21'-0" | | 165 SF | |
| W102 | 16'-4 3/32" | 20'-0" | 321 SF | |
| W103 | 14'-1 3/4" | 11'-0" | 156 SF | |
| W104 | 19'-10 3/4" | 7'-5 231/256" | 141 SF | |
| W106 | 11'-8" | 11'-0" | 120 SF | |
| W107 | 12'-7 1/2" | 7'-5 125/256" | 44 SF | TILT TURN EGRESS WINDOW |
| W108 | 2'-6" | 7'-6" | 18 SF | |
| W109 | 13'-6 5/8" | 11'-6" | 156 SF | |
| W110 | 2'-6" | 7'-6" | 18 SF | |
| W111 | 7'-6" | 0'-0" | 60 SF | |

| Number | Name | Area | Floor Finish | Wall Finish | Ceiling | | Comments |
|--------------|-----------------|------------|--------------|-------------------|-------------------|------------|----------|
| | | | | | Material | Height | |
| Not Placed | | | | | | | |
| 02 | STORAGE | Not Placed | CONCRETE | | | 12'-8 1/8" | |
| 19 | LOFT SPACE | Not Placed | | | | | VARIES |
| GARAGE LEVEL | | | | | | | |
| 01 | 2 CAR GARAGE | 1511 SF | CONCRETE | 5/8" TYPE 'X' GNB | 5/8" TYPE 'X' GNB | 12'-8 1/8" | |
| 03 | MUD ROOM | 61 SF | CONCRETE | | | 12'-8 1/8" | |
| 04 | FDR | 26 SF | CONCRETE | | | 12'-8 1/8" | |
| 05 | STARWELL | 40 SF | | | | | VARIES |
| MAIN LEVEL | | | | | | | |
| 1 | COVERED ENTRY | 80 SF | | | | | VARIES |
| 2 | COAT | 13 SF | | | | | VARIES |
| 3 | CL | 16 SF | | | | | VARIES |
| 4 | DINING | 322 SF | | | | | VARIES |
| 5 | KITCHEN | 442 SF | | | | | VARIES |
| 6 | HALL | 134 SF | | | | | VARIES |
| T | BATH | 64 SF | | | | 8'-1 3/8" | |
| 8 | LAUNDRY | 143 SF | | | | 8'-1 3/8" | |
| 08 | SAUNA | 160 SF | | | | | VARIES |
| 9 | TV ROOM | 356 SF | | | | | VARIES |
| 09 | WEIGHT | 184 SF | | | | | VARIES |
| 10 | CLT | 14 SF | | | | | VARIES |
| 11 | PANTRY | 45 SF | | | | | VARIES |
| 12 | HALL | 65 SF | | | | | VARIES |
| 13 | CL | 16 SF | | | | | VARIES |
| 14 | PRIMARY BEDROOM | 356 SF | | | | | VARIES |
| 15 | CLT | 51 SF | | | | | VARIES |
| 16 | PRMAY BATH | 150 SF | | | | | VARIES |
| 17 | MUSIC STUDIO | 426 SF | | | | | VARIES |
| 18 | DOG RUN / CATIO | 283 SF | | | | | VARIES |
| UPPER LEVEL | | | | | | | |
| 06 | BEDROOM | 230 SF | | | | | VARIES |
| 07 | BEDROOM | 170 SF | | | | | VARIES |
| 23 | CLT | 6 SF | | | | | VARIES |
| 20 | CLOSET | 25 SF | | | | | VARIES |
| 21 | LOUNGE | 630 SF | | | | | VARIES |
| 22 | CLT | 6 SF | | | | | VARIES |
| 23 | BATH | 61 SF | | | | | VARIES |
| 25 | CLOSET | 41 SF | | | | | VARIES |
| 26 | BATH | 103 SF | | | | | VARIES |
| 27 | TLT | 24 SF | | | | | VARIES |
| 28 | Room | 85 SF | | | | | VARIES |
| OFFICE TP | | | | | | | |
| 24 | MECHANICAL ROOM | 215 SF | | | | | VARIES |
| | | 64 SF | | | | | |

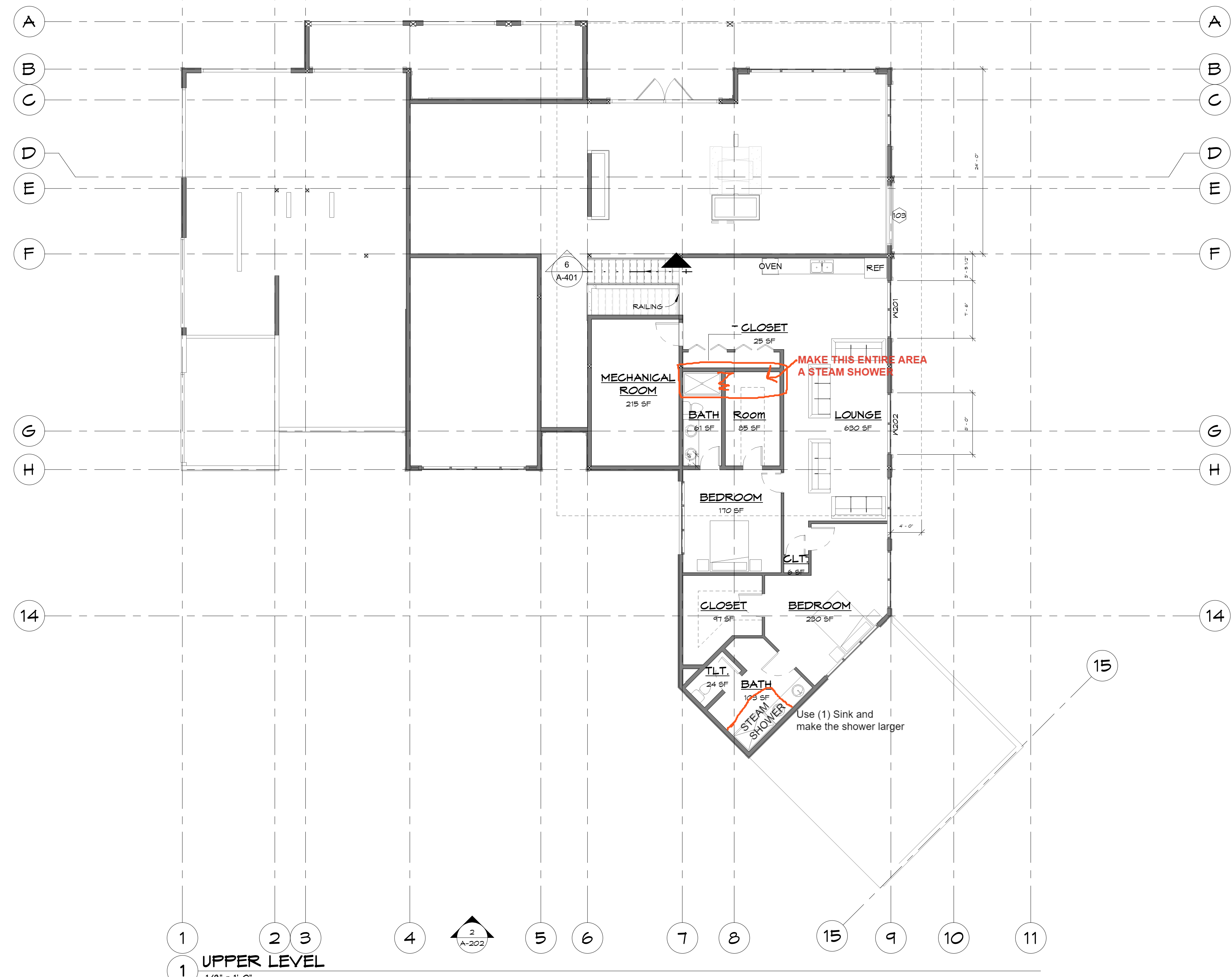
MAIN LEVEL

Drawn By
 TL
 4/7/2023 1:07:42 PM

Drawing Index
 No. Date Description

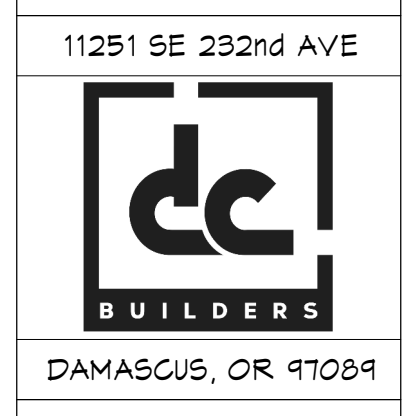
A-102

1 2 3 4 5 6 7 8 9 10 11



1 UPPER LEVEL
1/8" = 1'-0"

| AREA - CONDITIONED SPACE | |
|---|----------------------|
| NOTE: CONDITIONED SPACE MEASURED FROM EXTERIOR SURFACES OF EXTERIOR FRAMING | |
| CONDITIONED | |
| GARAGE ENTRY | 116 SF CONDITIONED |
| MAIN LEVEL LIVING | 2974 SF CONDITIONED |
| MECHANICAL | 234 SF CONDITIONED |
| UPPER LEVEL LIVING | 169 SF CONDITIONED |
| | 4093 SF |
| UNCONDITIONED | |
| COVERED ENTRY | 82 SF UNCONDITIONED |
| GARAGE/STORAGE | 516 SF UNCONDITIONED |
| PATIO | 431 SF UNCONDITIONED |
| | 1029 SF |
| GRAND TOTAL | 5127 SF |



BROOKS CUSTOM HOME
32821 SW RIEDWEG RD.
CORNELIUS, OR 97113

Window Schedule Upper Level

| Mark | Type | Width | Height | Head Height (BTM of HDR) | Operation | Provided By |
|------|------|-------|--------|--------------------------|-----------|-------------|
|------|------|-------|--------|--------------------------|-----------|-------------|

Curtain Wall Schedule Upper Level

| Mark | Length | Unconnected Height | Area | Comments |
|------|-------------|--------------------|-------|------------------------|
| | 8' - 0" | 10' - 8 11/120" | 83 SF | TLT TURN EGRESS WINDOW |
| | 9' - 6" | 9' - 0" | 86 SF | TLT TURN EGRESS WINDOW |
| | 9' - 6" | 9' - 0" | 86 SF | TLT TURN EGRESS WINDOW |
| | 7' - 6 1/2" | 11' - 6" | 87 SF | TLT TURN EGRESS WINDOW |
| W201 | 7' - 6" | 11' - 6" | 87 SF | TLT TURN EGRESS WINDOW |
| W202 | 8' - 0" | 10' - 8 11/120" | 83 SF | TLT TURN EGRESS WINDOW |

Door Schedule Upper Level

| Mark | Type | Width | Height | Operation | Door Swing | Comments |
|-------------|------|---------|---------|--------------------|------------|----------|
| UPPER LEVEL | | | | | | |
| 211 | A | 2' - 6" | 8' - 0" | SWING - ARCHED TOP | RHS | |
| 220 | A | 5' - 0" | 8' - 0" | SWING | LHS | |
| 221 | A | 2' - 6" | 8' - 0" | SWING - ARCHED TOP | RHS | |
| 222 | O | 3' - 0" | 8' - 0" | SWING | | |
| 223 | O | 3' - 0" | 8' - 0" | SWING | | |
| 224 | O | 3' - 0" | 8' - 0" | SWING | | |
| 225 | K | 2' - 6" | 8' - 0" | | | |
| 226 | K | 2' - 6" | 8' - 0" | | | |
| 227 | III | 5' - 0" | 8' - 0" | | | |
| 228 | III | 5' - 0" | 8' - 0" | | | |

Room Schedule

| Number | Name | Area | Floor Finish | Wall Finish | Ceiling | | Comments |
|--------------|-----------------|------------|--------------|-------------------|-------------------|--------------|-------------|
| | | | | | Material | Height | |
| Not Placed | | | | | | | |
| 02 | STORAGE | Not Placed | CONCRETE | | | 12' - 8 1/8" | |
| 14 | LOFT SPACE | Not Placed | | | | | VARIES |
| GARAGE LEVEL | | | | | | | |
| 01 | 6 CAR GARAGE | 1517 SF | CONCRETE | 5/8" TYPE 'X' GWB | 5/8" TYPE 'X' GWB | 12' - 8 1/8" | |
| 03 | MUD ROOM | 61 SF | CONCRETE | | | 12' - 8 1/8" | |
| 04 | PDR | 26 SF | CONCRETE | | | 12' - 8 1/8" | |
| 05 | STAIRWELL | 40 SF | | | | | VARIES |
| MAIN LEVEL | | | | | | | |
| 1 | COVERED ENTRY | 80 SF | | | | | VARIES |
| 2 | LIVING | 448 SF | | | | | VARIES |
| 3 | COAT | 13 SF | | | | | 9' - 0" |
| 4 | DINING | 322 SF | | | | | VARIES |
| 5 | KITCHEN | 442 SF | | | | | VARIES |
| 6 | HALL | 134 SF | | | | | VARIES |
| 7 | BATH | 64 SF | | | | | 9' - 1 3/8" |
| 8 | LAUNDRY | 143 SF | | | | | 9' - 1 3/8" |
| 08 | SUNA | 160 SF | | | | | |
| 9 | TV ROOM | 396 SF | | | | | VARIES |
| 09 | MEHT | 128 SF | | | | | |
| 10 | CLT | 14 SF | | | | | VARIES |
| 11 | PANTRY | 45 SF | | | | | VARIES |
| 12 | HALL | 65 SF | | | | | VARIES |
| 13 | CL | 16 SF | | | | | VARIES |
| 14 | PRIMARY BEDROOM | 247 SF | | | | | VARIES |
| 15 | CLT | 51 SF | | | | | VARIES |
| 16 | PRIMAY BATH | 150 SF | | | | | VARIES |
| 17 | MUSIC STUDIO | 426 SF | | | | | VARIES |
| 18 | DOG RUN / CATIO | 283 SF | | | | | VARIES |
| UPPER LEVEL | | | | | | | |
| 06 | BEDROOM | 230 SF | | | | | |
| 07 | BEDROOM | 170 SF | | | | | |
| 20 | CLOSET | 25 SF | | | | | VARIES |
| 21 | LOUNGE | 630 SF | | | | | VARIES |
| 22 | CLT | 6 SF | | | | | VARIES |
| 23 | BATH | 61 SF | | | | | VARIES |
| 25 | CLOSET | 97 SF | | | | | |
| 26 | BATH | 103 SF | | | | | |
| 27 | TLT | 24 SF | | | | | |
| 28 | Room | 85 SF | | | | | |
| OFFICE TP | | | | | | | |
| 24 | MECHANICAL ROOM | 215 SF | | | | | VARIES |
| | | 6454 SF | | | | | |

UPPER LEVEL

Drawn By
TL
4/7/2023 1:07:43 PM

Drawing Index

| No. | Date | Description |
|-----|------|-------------|
|-----|------|-------------|

A-103